

# SKYGLAZE

## SLIDE TECHNICAL DATA SHEET

### ENERGY EFFICIENCY

Thermal Transmission Coefficient

$U_w$  from 0.9 (W/m<sup>2</sup>K)

Please consult typology, dimensions and glazing.

### ACOUSTIC INSULATION

Maximum glazing: 1.75 in [54 mm]

Maximum acoustic insulation:  $R_w = 43$  dB

### CATEGORIES ACHIEVED AT TEST CENTER

Air permeability (EN 12207):

Class 4

Water tightness (EN 12208):

Class 7A\* / 9A

Wind resistance (EN 12210):

Class C 3\* / C 4\*\*

\* Reference test: Balcony 157.48 x 118.11 in [4.00 x 3.00 m], 2 sashes.

\*\* Reference test: Balcony 157.48 x 118.11 in [4.00 x 3.00 m], 1 sash + 1 fixed.

SECTIONS	Double Rail Frame Depth = 7.09 in [180 mm]	PROFILE MATERIAL	6063 T-5
	Triple Rail Frame Depth = 10.94 in [278mm]		THERMAL BREAKS
	Quad Rail Frame Depth = 14.80 in [376mm]		25% Fiberglass reinforced Polyamide 6.6
	Interlock Sash Width = 0.98 in [25mm]		
MAXIMUM DIMENSIONS	Width (L) = 157.48 in [4,000 mm]	OPENING POSSIBILITIES	1, 2, 3, 4 or 6 Sliding Sashes
	Height (H) = 157.48 in [4,000 mm]		1, 2, 3, or 4 Rails
	Glass surface $\leq 45^\circ$ 11.1875 in <sup>2</sup>		Interior and Exterior Corner Sash at 90 degree without mullion
MAXIMUM WEIGHT/SASH	881 lbs Manual		1, 2, 3 or 4 Pocket Sashes
	1543 lbs Motorized		
Please consult regarding maximum weight and dimensions according to types			
DRAINAGE	Optional drainage system with stainless steel drainage grid		

### FINISHES

Three standard Colors:

Jet Black

Anthracite Grey

Emery Silver

Custom Options Available

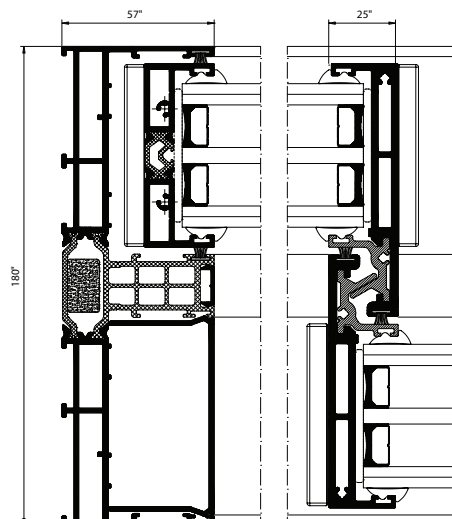
Anodized

According to Ewwa Euras

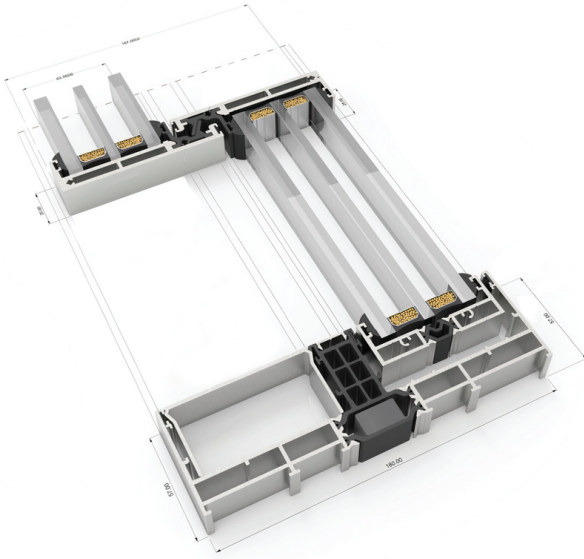
Standard Class 15 Optionally

Class 20 and 25

Optionally bi-colored



SLIDE OVERVIEW



Maximum Panels: 6 Bi-Parting/ 3 Uni-directional or Pocketing

Maximum Panel Width: 157.5"

Maximum Panel Height: 157.5"

Frame Depth:

1 Track = 3.25"

2 Track = 7.06"

3 Track = 10.94"

Pocket Depth: 4.63" / Pocket

Frame Width: 2.56"

Panel Width: 3.25"

Minimum Glazing Thickness: 1.4375"

Maximum Glazing Thickness: 2.06"

Configurations: Stack, Multi-Slide Pocket

OPENING POSSIBILITIES

Sliding of 1, 2, 3, 4, & 6 sashes

Possibility of 1, 2, or 3 tracks

Possibility of interior and exterior corner sash at 90° without mullion

Pocket openings in 1, 2, 3, & 4 sashes

